



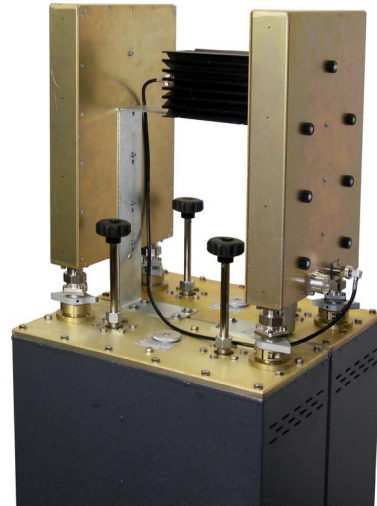
Double bridge FM Combiners

>2.5 MHz channel spacing



The below models of bridge combiners are:

- Consists of 2 filters, 2 hybrid couplers and a balance load
- Suitable for low to medium power FM radio broadcasting
- Available in multiple configurations of input/output connectors
- High quality construction for a long, reliable service life
- Version with 1.5 MHz channel spacing available



	FDB-2000	FDB-3000	FDB-4000	FDB-8000	FDB-10000
Construction	Surtec 650 passivated finish aluminium, silver plated copper internals and PTFE				
Frequency range	87.5-108 MHz - FM Radio				
Bandwidth - 3dB specify	300-600 kHz				
VSWR	<1.15:1				
Min. space between channels	>2.5 MHz				
Impedance	50 Ohms				
Insertion loss	0.2-0.6 dB		0.2-0.5 dB		0.2-0.4 dB
Insulation among channels	35 dB typical				
Working temperature	+10° to +40°C				
Input connector	N-type female	N-type or 7/16" DIN F	7/16" DIN female	7/8" EIA	
Output connector	7/16" DIN female	7/8" EIA		1-5/8" EIA	
Maximum power	800 Watts	1 or 2kW	2kW	4kW	5kW
Weight	25.5kg	26.0kg	45.0kg	50.0kg	65.0kg
Dimensions	H: 1170mm W: 410mm D: 300mm	H: 1170mm W: 410mm D: 310mm	H: 1460mm W: 460mm D: 420mm	H: 1460mm W: 480mm D: 420mm	H: 1350mm W: 900mm D: 500mm
Warranty	2 Year warranty on manufacturing defects, 1 Year warranty on termination/connections from purchase date				